

# UNI Trend expert.

<https://www.mql5.com/en/market/product/52496>

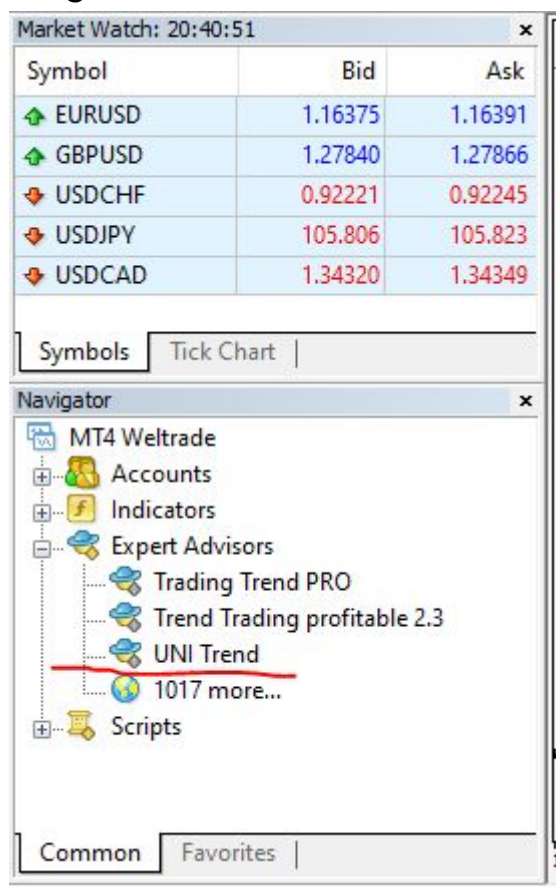
## Installation

You can purchase an Expert in the [Market of the MQL5 website](https://www.mql5.com/en/market/product/52496) or directly in the Terminal by entering the name UNI Trend in the search bar.

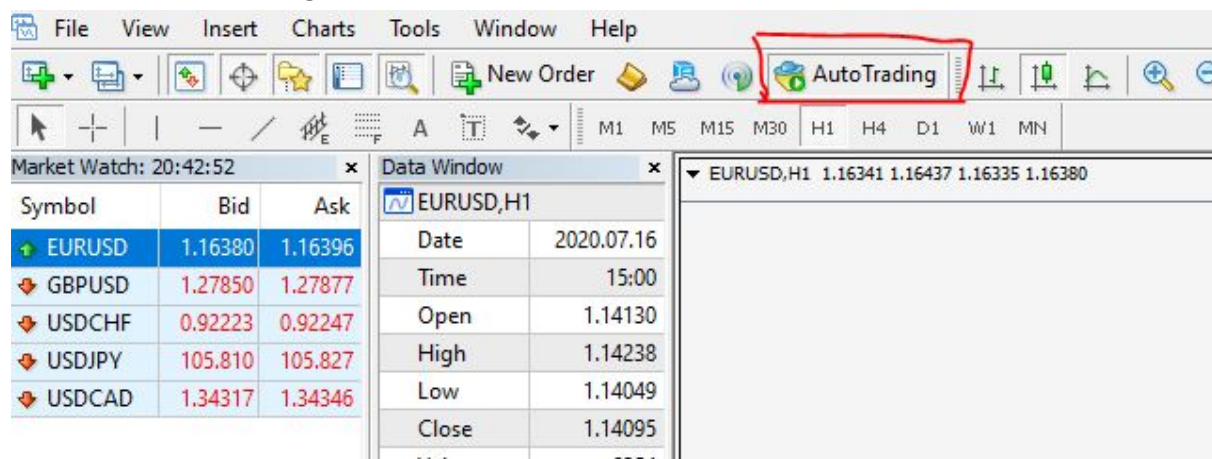


After purchase, you can download it in the Market, in the Terminal in the "Purchases" section.

Then you download the Expert Advisor and it appears in your Terminal navigator.



## Turn on AutoTrading Advisor



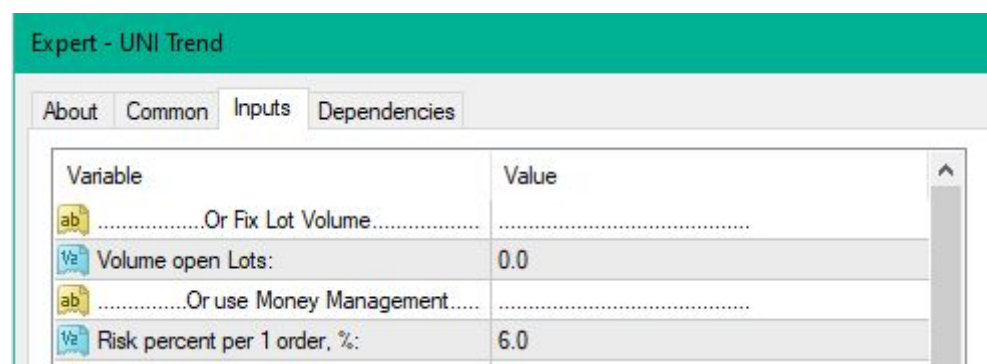
And attach the Expert to the chart.

The recommended pairs are EURUSD, GBPUSD, USDCHF, USDJPY, USDCAD, the timeframe is greater than H1.

## Strategy The Expert

Expert opens a Buy or Sell order when it detects the beginning of a trend.

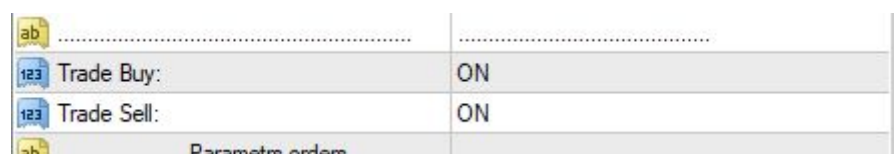
The EA has a minimum of settings for ease of use, but at the same time, a sufficient number of settings for effective control of open orders:



Volume open Lots: - to manually select the size of an opened order

Risk percent per 1 order, %: - to automatically calculate the size of an opened order, depending on the selected Money Management percentage (the Stop Loss, pips parameter must be specified)

You can choose to use either Volume open Lots or Risk percent per 1 order, %, if one of the Volume parameters is selected, the other unused Volume parameter must be set 0.



Trade Buy: - enable the ability to open buy orders

Trade Sell: - enable the ability to open sell orders

ab	.....Parametrs orders.....	
123	Stop Loss, pips:	600
123	Take Profit, pips:	2700
123	Slippage, pips:	30
123	Maximum spread, pips:	30

**Stop Loss, pips:** - Stop Loss size of the open order

**Take Profit, pips:** - Take Profit size of the opened order

**Slippage, pips:** - size allowable slippage when opening an order

**Maximum spread, pips:** - maximum allowable spread for opening If the spread is greater than this value, the order will not be opened, which will save you from widening spreads, for example, during the Asian session.

123	Trailing Stop, ON/OFF:	ON
123	TS Start, pips:	600
123	Trailing Stop, pips:	600
123	TS Step, pips:	20

**Trailing Stop, ON / OFF:** - the ability to enable / disable Trailing Stop

**TS Start, pips:** - the start level of the Trailing Stop

**Trailing Stop, pips:** - the Trailing Stop level (if Trailing Stop is ON), then the Trailing Stop value must be greater than 0

**TS Step, pips:** - the Trailing Stop step

123	Close part Take Profit:	OFF
123	Volume part order for close, %:	50
123	Percent pips of TP for close part, %:	50

**Close part Take Profit:** - the ability to enable / disable partial (in%) closing of an order when the partial Take Profit level (in%) is reached, i.e. for example, you can close 70% of an open order if the price has reached 70% of the Take Profit level, and the rest will be closed when the 100% Take Profit level is reached.

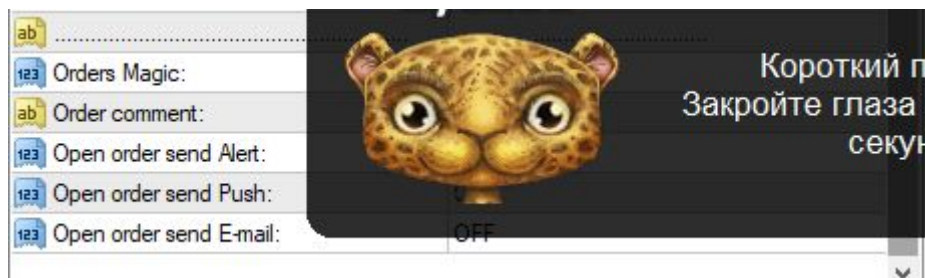
**Volume part order for close,%:** - what part of the order (in%) will be closed

**Percent pips of TP for close part,%:** - what Take Profit level (in%) the price must reach in order to close a part of the open order

ab	.....FAST Indicator.....	
123	Period FAST Indicator:	5
123	Shift FAST Indicator:	0
123	Calculate FAST Indicator:	Exponential
123	Price FAST Indicator:	Close price
ab	.....SLOW Indicator.....	
123	Period SLOW Indicator:	21
123	Shift SLOW Indicator:	0
123	Calculate SLOW Indicator:	Smoothed
123	Price SLOW Indicator:	Low price

**FAST Indicator** - settings of the fast indicator

**SLOW Indicator** - settings of the slow indicator



Orders Magic: - Magic order of opened orders, to distinguish which orders the Expert Advisor should work with

Order comment: - Comment to opened orders

Open order send Alert: - Enable / disable sending Alert when an order is opened by Expert

Open order send Push: - enable / disable sending a Push message to the mobile terminal when an expert opens an order

Open order send E-mail: - enable / disable sending an e-mail when an expert opens an order

In the Expert Advisor, you can choose whether you want to use Stop Loss, Take Profit or Trailing Stop.

If you do not want to use any of these parameters, specify 0 in the parameter value.

Depending on the selected parameters, the EA operation logic will change - for example, if you do not specify the Take Profit value, the EA will hold a profitable deal on the trending market for a long time and will close by Trailing Stop.

*You can leave a review in the market and get any advisor of your choice as a gift!*

My other experts for trading -

<https://www.mql5.com/en/users/a.medvedev/seller>

Have a nice day and profitable trading.